


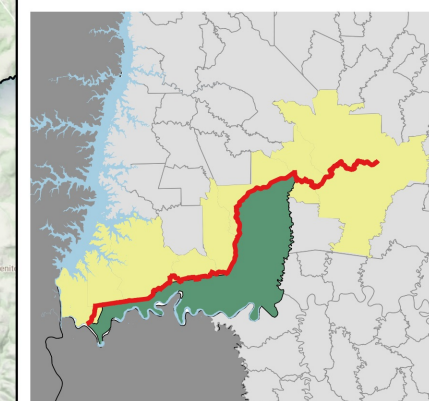


# Caminho do Iguaçu: Situação dos Trechos

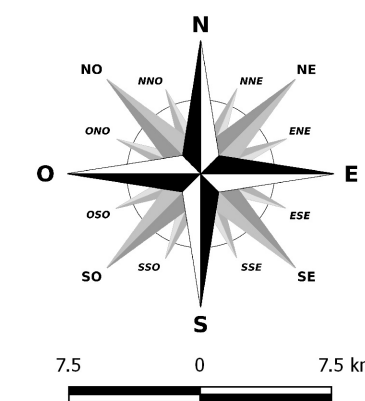
## Legenda

-  Passarelas Fechadas
-  Aberto
-  Fechado

## Localização:



Municípios do oeste paranaense abrangidos pela rota



Projeção de Referência  
WGS 84  
Base Cartográfica:  
CIH, 2016

-24.9

-25.2

-25.6

-54.4

-53.9

-53.4